

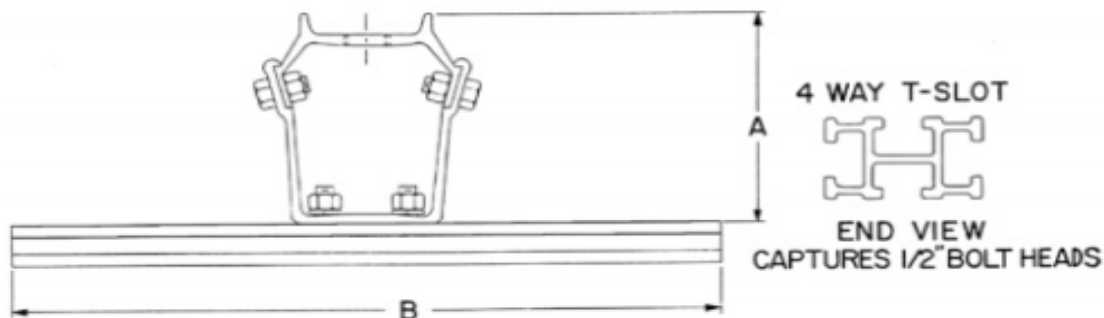
UNDERGROUND SERVICE REQUIREMENTS

- 1) A QUALIFIED ELECTRICIAN OR PERSON WITH ELECTRICAL KNOWLEDGE AND SAFETY UNDERSTANDING SHALL TRENCH AND INSTALL THE SERVICE FROM THE POLE TO THE HOUSE
- 2) SERVICE MUST ALSO BE TERMINATED AT THE METER BASE AND SWITCH BOX
- 3) MINIMUM BURIAL DEPTH OF 24 INCHES TO FINAL GRADE
- 4) SERVICE MAY BE DIRECT BURIED OR INSTALLED IN CONDUIT (NOTE - SERVICE MUST BE IN CONDUIT UNDER CONCRETE OR ASPHALT)
- 5) CONDUIT MAY BE SCHEDULE 40 OR 80 AT HOUSE (2" CONDUIT)
- 6) CONDUIT SHALL BE 2" RIGID AT THE POLE WITH A WEATHERHEAD APPROXIMATELY 3FT BELOW TRANSFORMER AND A SWEEPING 90 AT THE BOTTOM OF POLE
- 7) 35FT POLE HEIGHT - INSTALL 20FT 2" - RIGID CONDUIT WITH TWO (2) STAND-OFF BRACKETS
- 8) 40FT POLE HEIGHT - INSTALL 25FT 2" - RIGID CONDUIT WITH THREE (3) STAND-OFF BRACKETS
NOTE - SEE DIAGRAM BELOW FOR ILLUSTRATION OF STAND-OFF BRACKETS
- 9) NOTE - BEFORE CONDUIT PLACEMENT ON POLE CONSULT WITH MONROE COUNTY ELECTRIC POWER ASSOCIATION
- 10) UNDERGROUND SERVICE LENGTH - MEASURE LENGTH OF TRENCH AND ADD 40FT
- 11) MONROE COUNTY EPA WILL PROVIDE A 200 AMP METER BASE AND 100FT OF UNDERGROUND WIRE AT NO CHARGE TO A NEW HOME - THE CUSTOMER WILL BE RESPONSIBLE FOR ANY AMOUNT OVER 100FT (THIS POLICY DOES NOT APPLY TO MOBILE HOMES)
- 12) CONTACT MONROE COUNTY EPA WHEN THE UNDERGROUND SERVICE IS READY TO BE HOOKED UP AT THE TRANSFORMER OR IF YOU HAVE ANY QUESTIONS ABOUT THE INSTALLATION



A multi-purpose bracket for mounting 1" thru 6" conduit in a variety of ways. This bracket will mount up to six 6" conduits with infinite adjustability. 4-Way T-Slot extrusion eliminates field drilling. Mounts to the pole on 3 5/8" hole centers with 5/8" thru bolt and 1/2" lag screws (not supplied).

Catalog Number	Product	Weight	Dimensional Data	
			A	B
6-CSO-12	51961	4 lbs.	6"	12"
6-CSO-24	51962	5 lbs.	6"	24"
6-CSO-36	51963	6 lbs.	6"	36"
9-CSO-12	51964	4 lbs.	6"	12"
9-CSO-24	51965	5 lbs.	6"	24"
9-CSO-36	51966	6 lbs.	6"	36"



UNDERGROUND SERVICE INSTALLATION

